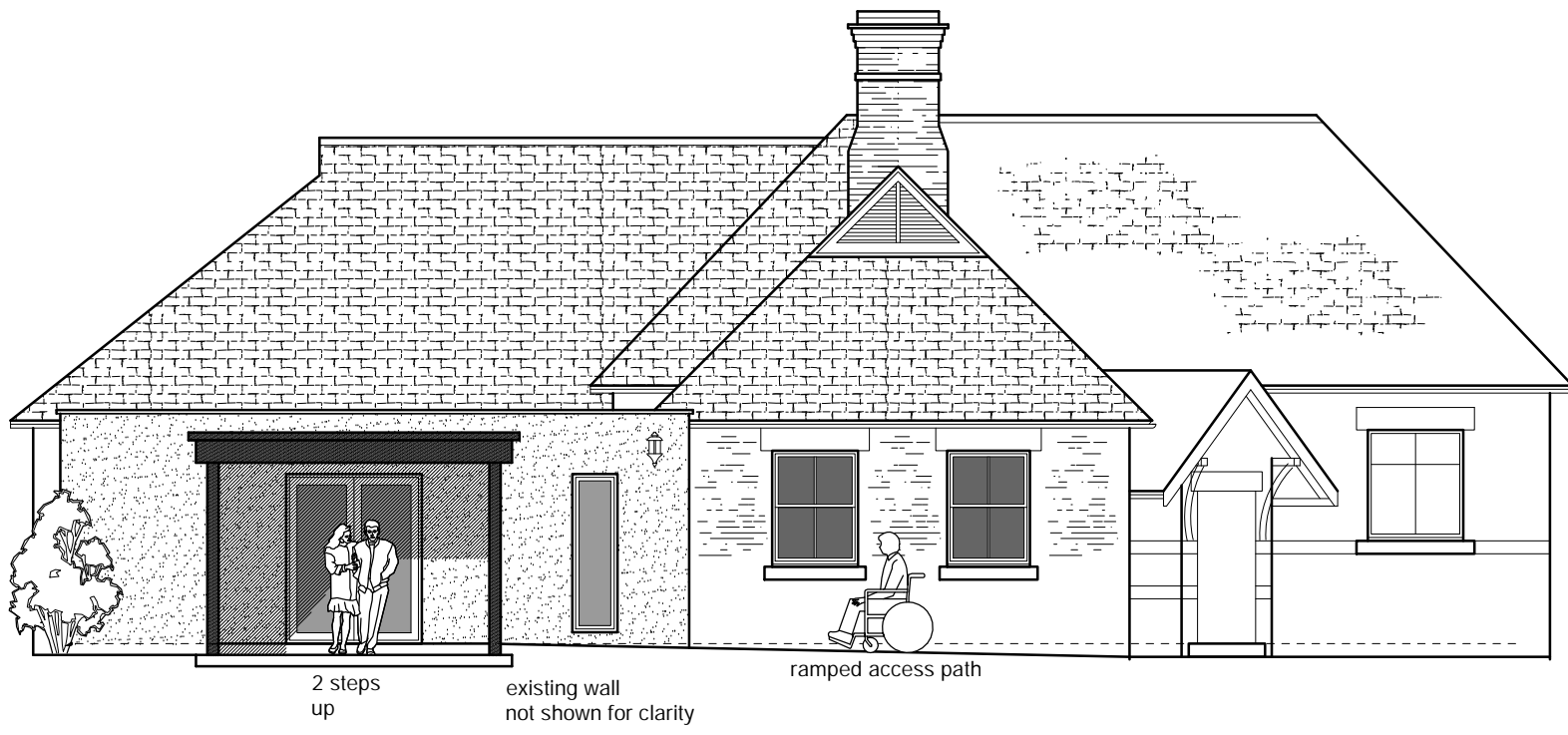


PROPOSED MATERIALS:-

ROOF:
flat roof concealed by parapet wall
& stone coping

WALLS:
monocouche render (textured - chalk white)

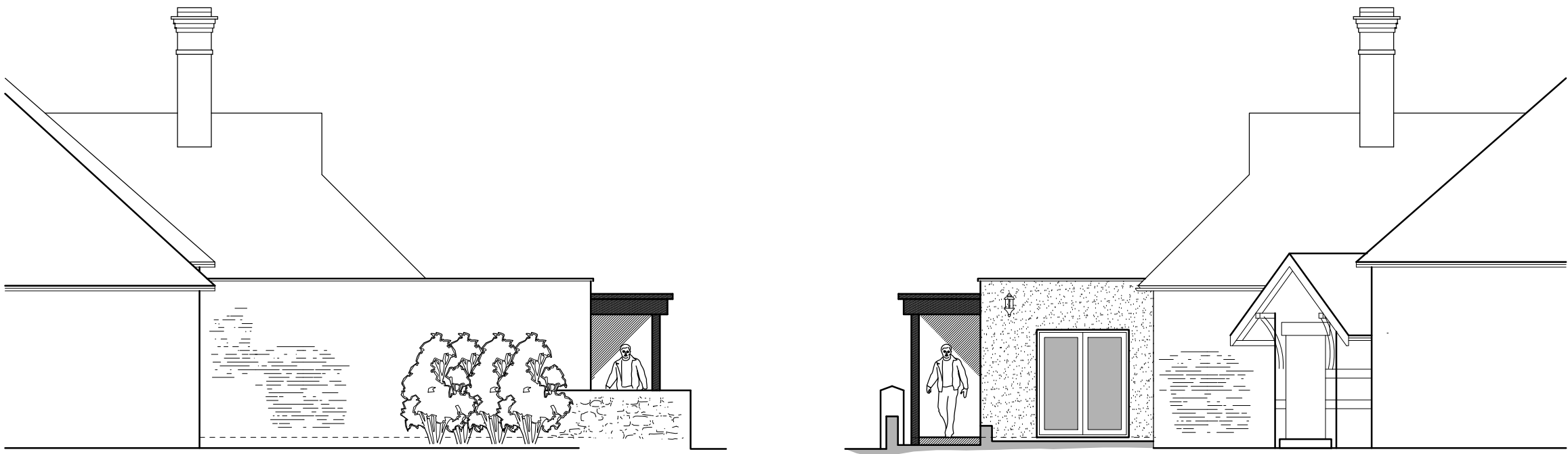
WINDOWS/DOORS:
aluminium dark framed



NORTH FACING ELEVATION
EXCLUDING CURTILAGE WALL

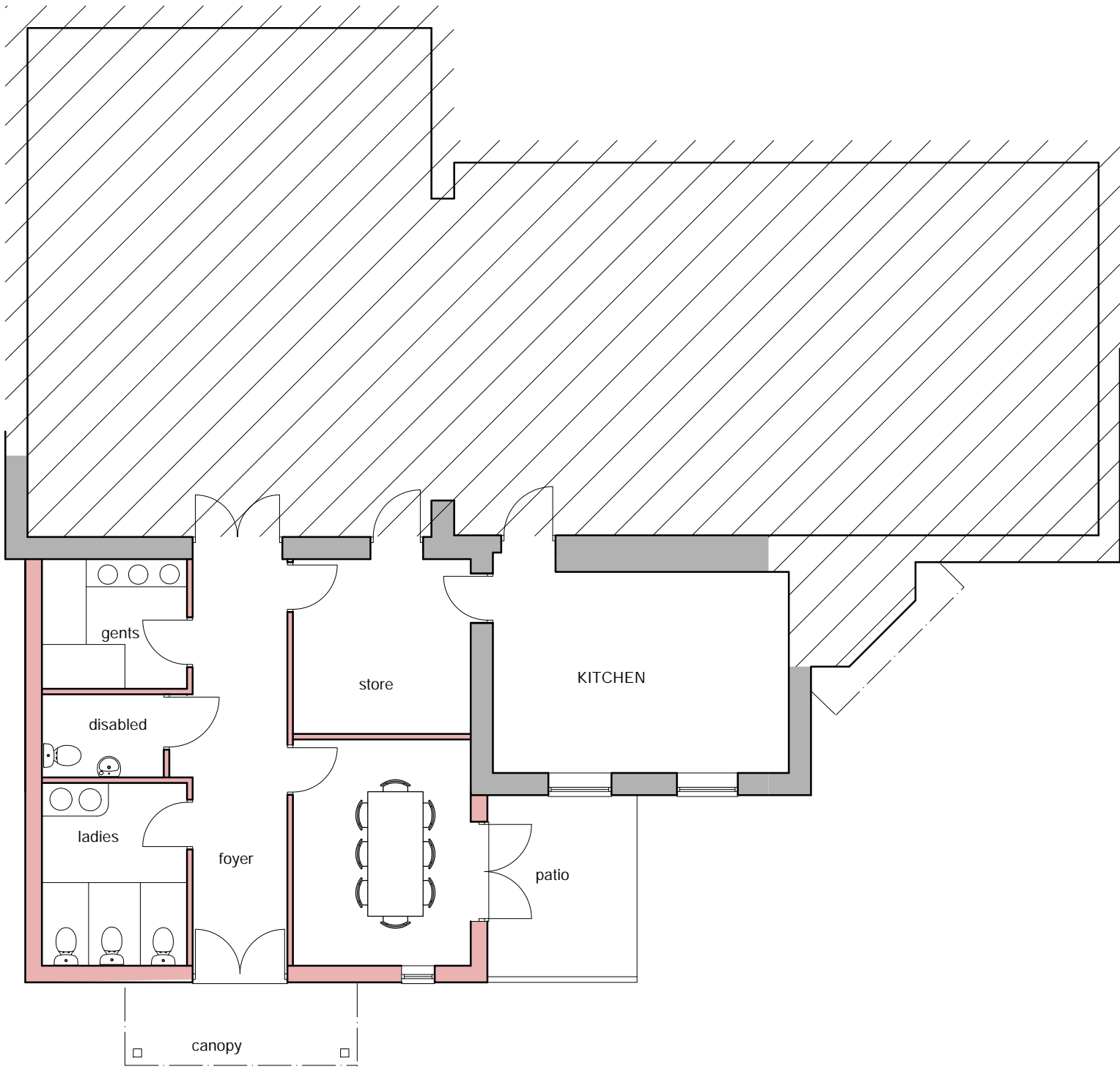


NORTH FACING ELEVATION
INCLUDING CURTILAGE WALL

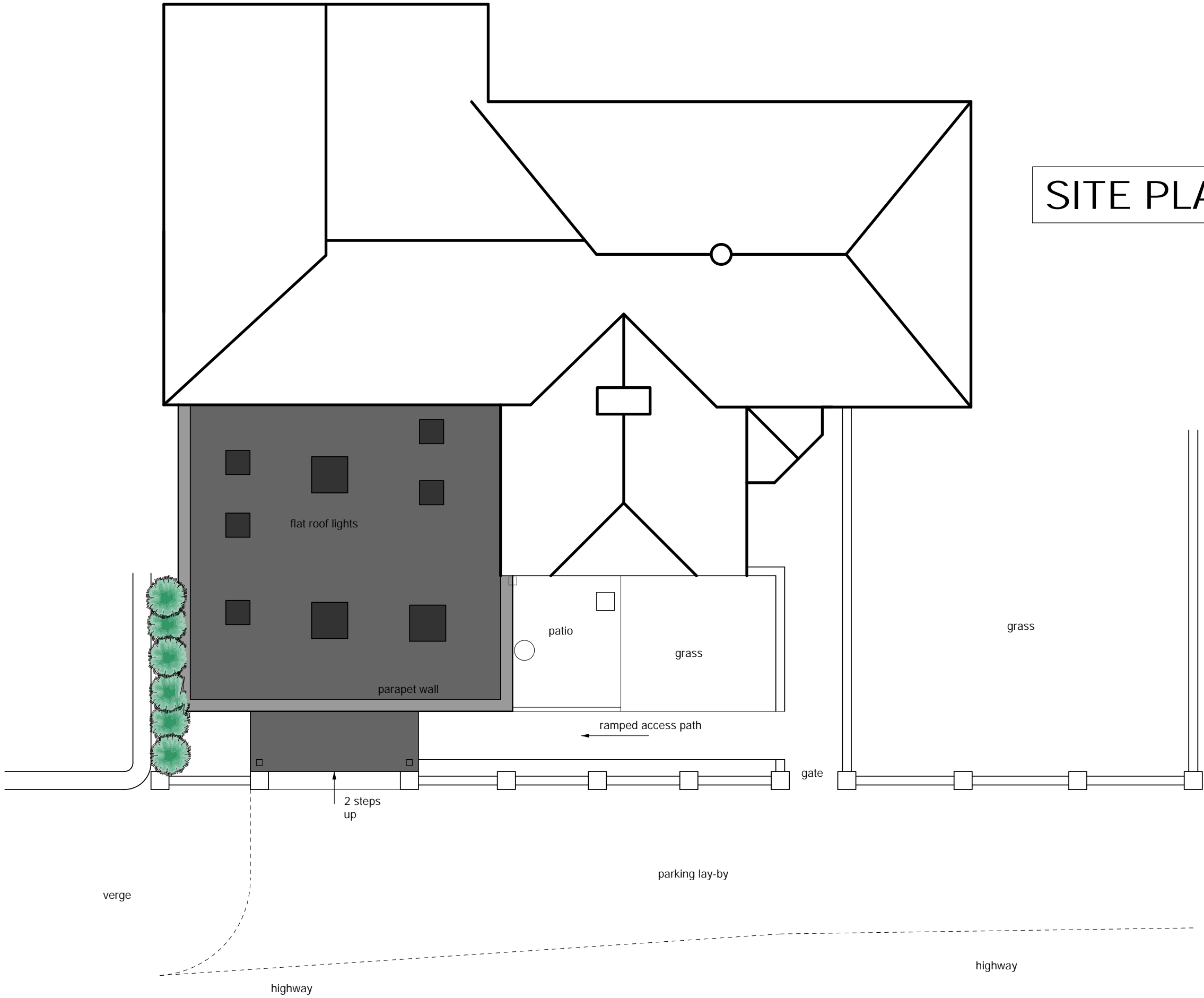


EAST FACING ELEVATION
(PARTIAL)

WEST FACING ELEVATION
(PARTIAL)



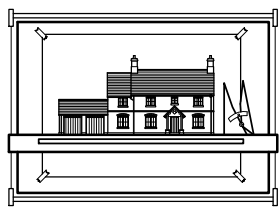
GROUND FLOOR PLAN (PARTIAL)



SITE PLAN

Jonathan Green

Architectural Design



Imladris, 72 Palace Road, Ripon HG14 1UN
jgreendesign@sky.com
07717 001731
www.jgreendesign.com

This drawing is copyright, no unauthorised reproduction

Do not scale from this drawing

Project

ALTERATIONS & EXTENSIONS
TO SNAPE INSTITUTE
AT
MEADOW LANE, SNAPE
FOR
SNAPE VILLAGE INSTITUTE

Title

PROPOSED DETAILS

Drawg No.

S47 - 2

Scale,

unless shown

otherwise

1:100 APX

Date

SEPT 2021

Sheet size

A1

Amendments